

# PM-LED ACCESSIBILITY

Shepherding project teams into accessible design and development

 @iamjolly #ID24 #a11y

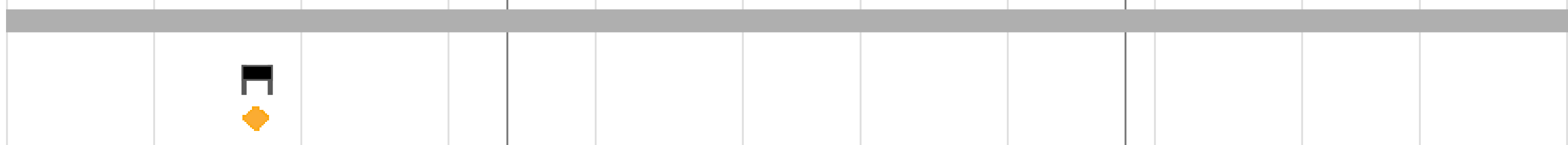
# THE PM: TYPICAL ROLES

#ID24 #a11y

**ACME CO**

**Project Setup**  
Project Kickoff

start end  
09/18/14 09/18/14  
09/18 09/18



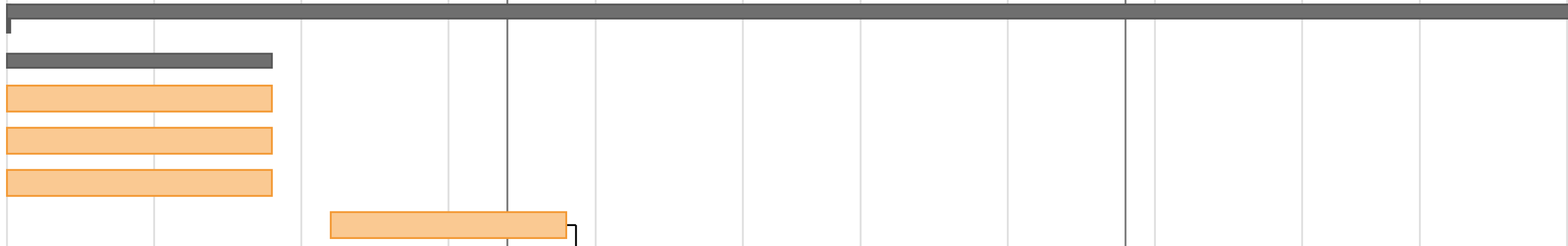
**IA & UX**  
Research  
Branch idea exploration  
Sketching for design work (internal)

09/08/14 11/07/14  
09/15 09/30  
09/15 09/30  
09/08 11/07



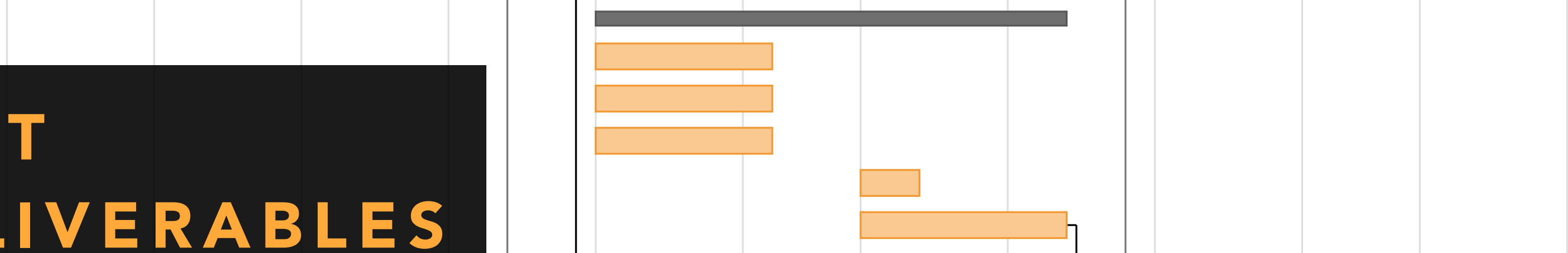
**Design**  
**Initial Design Concepts (9/18)**  
Ideas section (home, topic)  
Shop section (home, item)  
Events section (home)  
Revisions of 9/18 pages

09/08/14 12/02/14  
09/08/14 09/18/14  
09/08 09/18  
09/08 09/18  
09/08 09/18  
09/23 10/02



**Design Concepts (10/14)**  
Home (main)  
Events > category, conference, speakers ...  
Items > collection  
Minor revisions, based on feedback  
Revisions of 10/14 pages

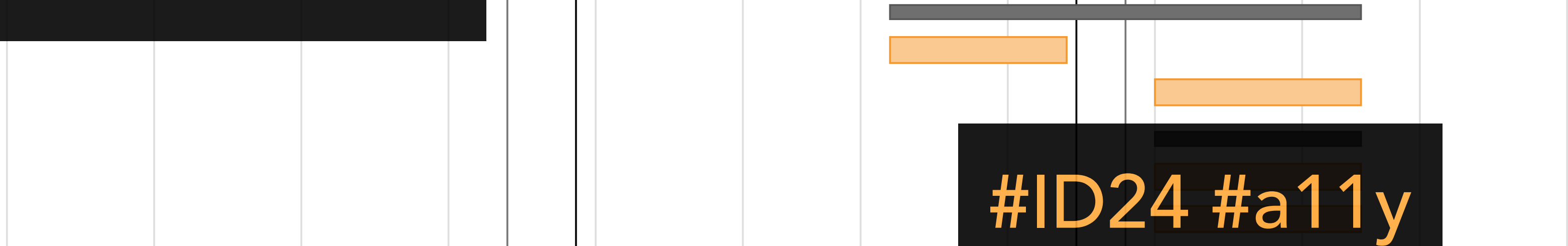
10/06/14 10/28/14  
10/06 10/14  
10/06 10/14  
10/05 10/14  
10/20 10/21  
10/20 10/21



**OVERSEE THE PROJECT  
TIMELINE, TASKS, DELIVERABLES**

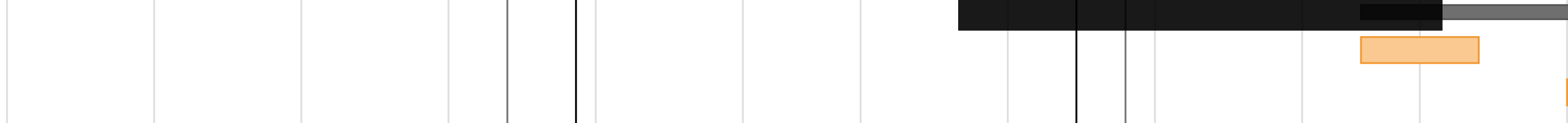
**Design Concepts (10/28)**  
Branch design  
Revisions of 10/29 pages  
**Design Concepts (11/11)**  
Revisions to Branch design  
Shop > category

10/21/14 11/12/14  
10/21 10/28  
11/03 11/12  
11/03/14 11/12/14  
11/03 11/12  
11/03 11/12



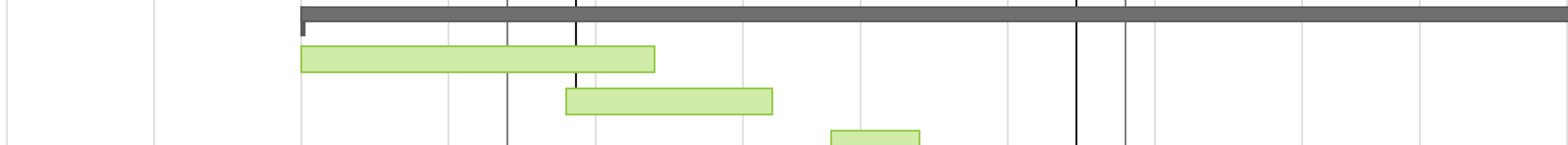
**Design support for dev work**  
Design support for 11/18 pages  
Design support for 12/2 pages

11/13/14 12/02/14  
11/13 11/18  
11/24 12/02



**Development**  
Lo-fi responsive layout (Pattern Lab)  
Develop 9/18 pages  
Markup revisions, based on feedback

09/22/14 12/02/14  
09/22 10/07  
10/03 10/14  
10/17 10/21



**#ID24 #a11y**

## WE ALSO MANAGE...

Communication

Risk Mitigation

Resourcing/Scheduling

Requirements/Scope

#ID24 #a11y

## **ACCESSIBILITY**

Whose responsibility is it?

#ID24 #a11y

## **ACCESSIBILITY**

Can PMs take the lead?

#ID24 #a11y

**Yes.**

#ID24 #a11y

# How?

#ID24 #a11y



## PM'S CAN CHAMPION ACCESSIBILITY VIA

Cultivating Empathy

Understanding Requirements

Communicating Risk

Staying Firm

#ID24 #a11y

## CULTIVATING EMPATHY

Connection with others at a human level.

#ID24 #a11y

**ASK YOURSELF, ASK YOUR TEAM**

How might we relate to everyone using this site?

#ID24 #a11y

**FOR INSTANCE**

A person who recently had a stroke.

#ID24 #a11y

**FOR INSTANCE**

A person with hearing loss.

#ID24 #a11y

**FOR INSTANCE**

A person with mobility issues.

#ID24 #a11y

**FOR INSTANCE**

A person with cognitive issues.

#ID24 #a11y

**FOR INSTANCE**

A person with low vision.

#ID24 #a11y



**FOR INSTANCE**

A parent holding their infant in one arm.

#ID24 #a11y

**FOR INSTANCE**

Someone reading a post outside in bright sunlight.

#ID24 #a11y

## CULTIVATING EMPATHY

Inquisitive

Non-judgmental

Validating

Compassionate

#ID24 #a11y

## NEW TO ACCESSIBILITY?

Seek out learning resources for accessibility.

W3C-WAI is a good place to start.

#ID24 #a11y

## WHEN IN DOUBT

Ask for help from people passionate about accessibility.

#ID24 #a11y

## UNDERSTANDING REQUIREMENTS

Accessibility isn't just a single line-item requirement.

#ID24 #a11y

## UNDERSTANDING REQUIREMENTS

Unpack the requirement(s)

What laws or guidelines exist?

Know roles and responsibilities

Communicate early and often

#ID24 #a11y

## COMMUNICATING RISK

Accessibility problems pose significant risks.

#ID24 #a11y



## COMMUNICATING RISK

Make stakeholders aware of legal risks

Report accessibility progress

Know when to ask for help

#ID24 #a11y

## STAYING FIRM

PMs have the power to be firm about accessibility

#ID24 #a11y

## STAYING FIRM

Use empathy to refocus efforts

Use the project's requirements

Escalate based on risk

#ID24 #a11y



**GO FORTH, FELLOW CAT HERDERS!**

**#ID24 #a11y**

# Questions?

 @iamjolly #ID24 #a11y